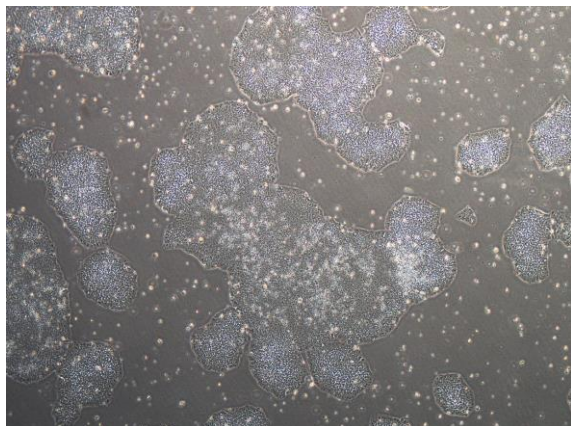
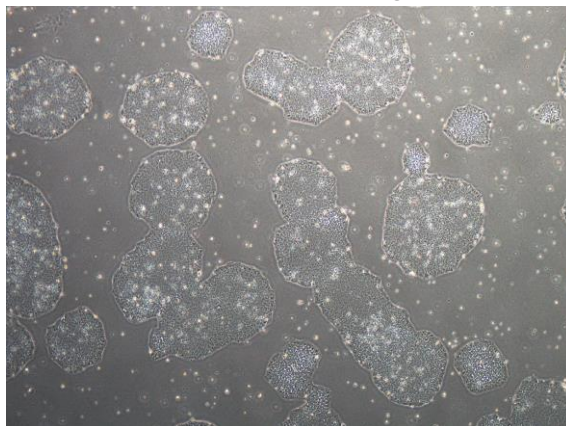


## 【 CiRA-j-1233 】 Morphology of iPSC colonies

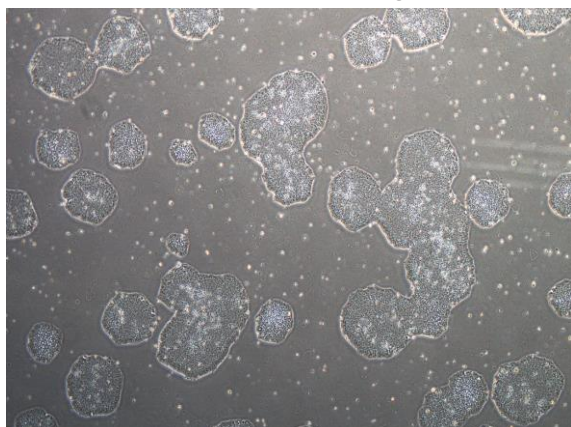
CiRA-j-1233-A: passage-3



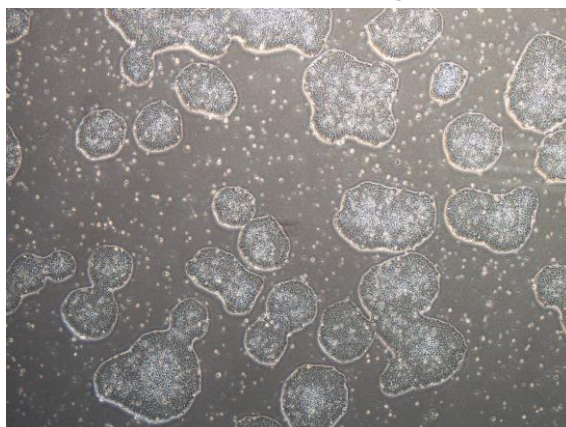
CiRA-j-1233-B: passage-3



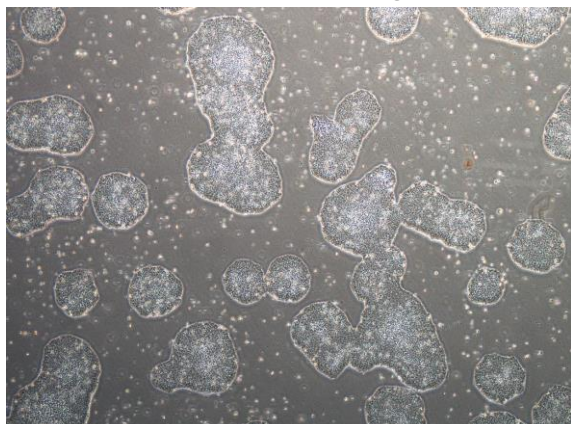
CiRA-j-1233-C: passage-3



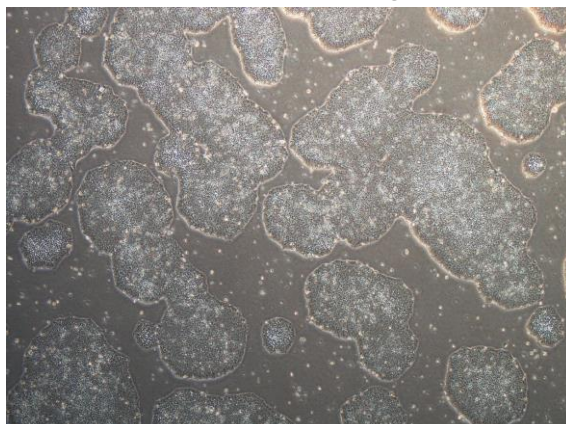
CiRA-j-1233-D: passage-3



CiRA-j-1233-E: passage-3



CiRA-j-1233-F: passage-3



( All images were captured at 4x magnification )